

Alexandra Road Wimbledon, SW19 7JZ

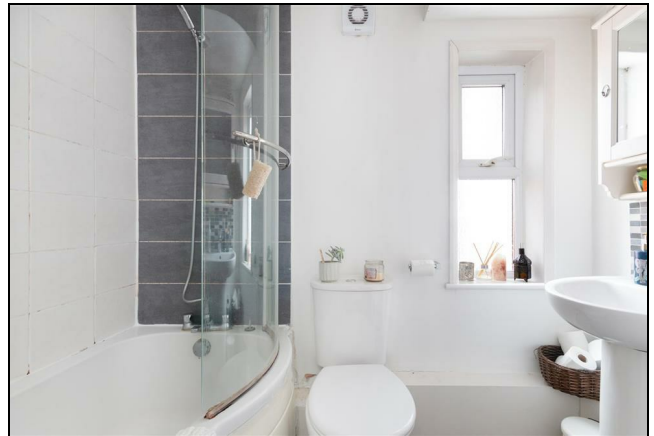
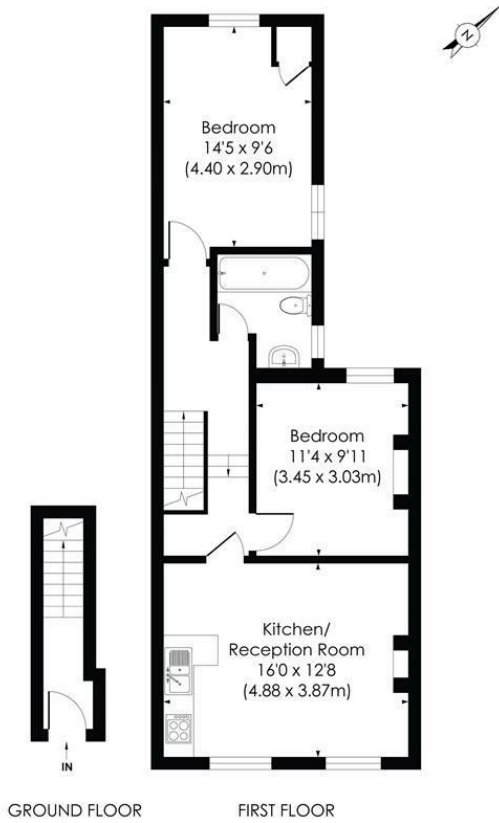
£485,000 Leasehold



Offered with no onward chain this spacious, two double bedroom first floor Victorian conversion flat, with off street parking, located within exceptionally close proximity of Wimbledon High Street and Station with its fantastic array of amenities and only short walk to Wimbledon Village and the common. Well presented throughout, this property has a bright open plan kitchen/diner, fitted three piece bathroom suite, two double bedrooms and a large reception with the added bonus of off street parking and superb potential to extend in to the loft (STPP).

ALEXANDRA ROAD, SW19

Approx. Gross Internal Floor Area
651 Sq. ft./60.50 Sq. m



| Energy Efficiency Rating | | Current | Potential |
|---|--|-------------------------|-----------|
| Very energy efficient - lower running costs | | | |
| (92 plus) A | | | |
| (81-91) B | | | |
| (69-80) C | | | |
| (55-68) D | | 59 | |
| (39-54) E | | | |
| (21-38) F | | | |
| (1-20) G | | | |
| Not energy efficient - higher running costs | | | |
| England & Wales | | EU Directive 2002/91/EC | |



This floor plan has been prepared for the purpose of illustration only in accordance with the latest RICS code of measuring practice and is not to scale. All measurements and areas are approximate and whilst every effort has been made to ensure the accuracy of the plan contained here, no responsibility is taken for any error, omission or misstatement.

- No Onward Chain
- Victorian Conversion
- Two Double Bedrooms
- Open Plan Kitchen/Dining Room
- Excellent Transport Links
- Superb Extension Potential (STPP)
- Service Charge - Ad/hoc. Ground Rent - Nil
- Lease - 155 years remaining
- EPC Rating D
- Council Tax Band C

For Free Mortgage Quote and Best Mortgage Rates, call an Ellisons Mortgage Advisor on 020 8944 9494



Although these particulars are believed to be correct, their accuracy is not guaranteed and they do not form part of any contract.

Celebrating 30 years of successful Sales and Lettings in Merton

